



Let **UK** Home

**2 Bedrooms**

**Flat**

Located in London

**£3,900 Per Month**



[info@letukhome.co.uk](mailto:info@letukhome.co.uk)

<https://www.letukhome.co.uk/>

01795 358 886



# 161 Fulham Road London

SW3 6SN



Nestled in the heart of London, this charming flat at Pond Place, 161 Fulham Road, offers a delightful blend of comfort and convenience. Spanning an impressive 670 square feet, this well-appointed residence features two spacious bedrooms, making it an ideal choice for professionals, couples, or small families seeking a vibrant urban lifestyle.

Upon entering, you are welcomed into a bright reception room that serves as the perfect space for relaxation or entertaining guests. The layout is thoughtfully designed, ensuring a seamless flow throughout the flat. The kitchen is well-equipped, providing all the essentials for culinary enthusiasts.

The two bedrooms are generously sized, offering ample storage and a peaceful retreat from the bustling city. The bathroom is modern and functional, catering to all your daily needs.

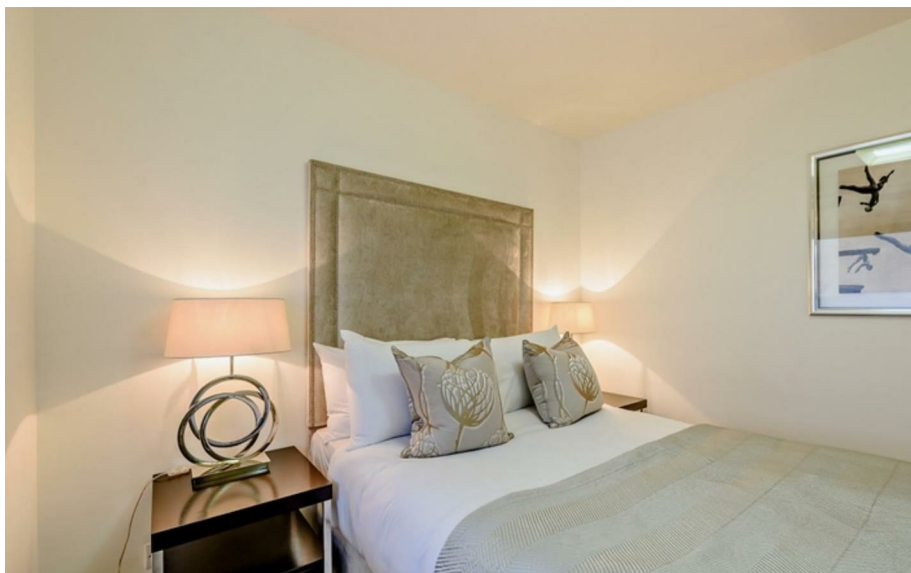
Located in the prestigious area of SW3, this property benefits from excellent transport links and a plethora of local amenities. Residents can enjoy the nearby shops, cafes, and restaurants, as well as the lush green spaces that London is renowned for.

This flat presents a wonderful opportunity to experience city living at its finest, combining comfort, style, and a prime location. Whether you are looking to buy or rent, this property is not to be missed.

# 161 Fulham Road London

£3,900 Per Month

- 3rd floor
- Available furnished or unfurnished
- Porter
- Video Entry
- CCTV
- Lifts
- Recycling
- EPC Rating: C





Let **UK** Home

3F 2 Eastbourne Terrace  
 Paddington  
 London  
 W2 6LG

01795 358 886

info@letukhome.co.uk

**Council Tax Band: F**

**Local Authority:**

Agents Note: Whilst every care has been taken to prepare these particulars, they are for guidance purposes only. All measurements are approximate and are for general guidance purposes only and whilst every care has been taken to ensure their accuracy, they should not be relied upon and potential buyers/tenants are advised to recheck the measurements.

Energy Efficiency Rating		Current	Potential
Very energy efficient - lower running costs			
(92 plus) <b>A</b>			
(81-91) <b>B</b>			
(69-80) <b>C</b>		80	81
(55-68) <b>D</b>			
(39-54) <b>E</b>			
(21-38) <b>F</b>			
(1-20) <b>G</b>			
Not energy efficient - higher running costs			
<b>England &amp; Wales</b>	EU Directive 2002/91/EC		

<https://www.letukhome.co.uk/>